



DESIGNED
IN EUROPE



The most advanced for moisture calculation

- **Data:** USB connection with export of results to spreadsheets.
- **Viewer:** Display of data and graphs of the process in real time.
 - **Keyboard:** PS2 keyboard connection for easy data entry.
- **Protocol:** GLP standard report printing.



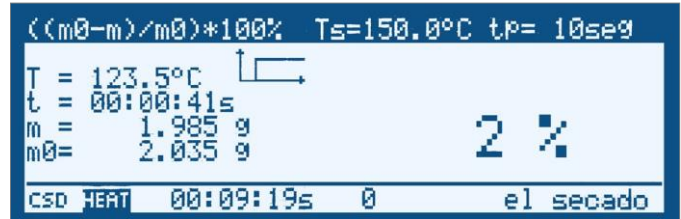
► Functions:

- **Drying:** 4 drying programmes (fast, slow, step and standard).
- **Memory:** 20 types of drying in memory.
- **Evaluations:** Proportional to initial weight, dried weight and dry weight content.



► **Fast and accurate moisture calculation.**

Halogen radiant heaters ensure fast and effective drying.



► **Easy to read alphanumeric display**

Includes detailed information on the moisture calculation process.



► **Thermogravimetric method**

Calculates the moisture content of the material by calculating the difference in weight during drying.

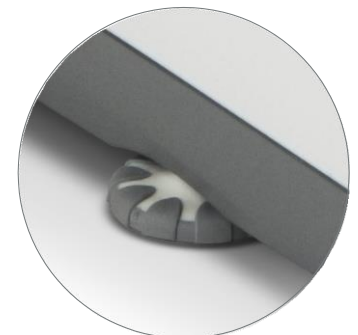


► **Connectivity**

Connection to PC or printer via RS 232-C output. Ticket printout with weighing data. USB data output as well as PS/2 for keyboard.

► **Adjustable feet**

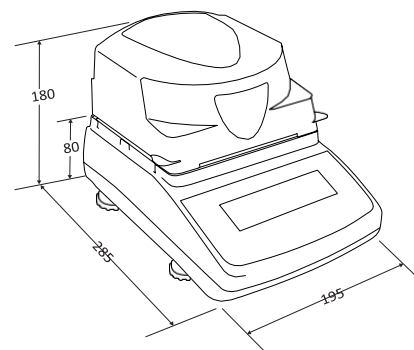
Anti-slip, to adjust the scale in a horizontal position and prevent slipping during daily use.



Model	RH-110	RH-210
Reference	61097	61098
Capacity	110 g	210 g
Moisture calculation resolution	1% (sample 0.02 ÷ 2.5g) 0.1% (sample 2.5 ÷ 25g) 0.01% (sample >25g)	1% (sample 0,02 ÷ 0,5g) 0,1% (sample 0,5 ÷ 5g) 0,01% (sample >5g)
Humidity calculation repeatability	± 0,5% (sample 2g)	± 0,1% (sample 2g) ± 0,04% (sample 5g)
Reading time	< 8 seconds	
Power supply	~230V 50Hz 130VA	
Working temperature	+18÷33°C	
Warm-up time	3 minutes	
Calibration	External	
Sampling time	1-180 seconds	
Maximum drying time	10 hours	
Weighing pan dimensions (mm)	90 Ø	
Drying chamber dimension (mm)	108 Ø x20mm	
Product dimension (mm)	185 x 290 x 170	
Net product weight (kg)	2,8 kg	3,9 kg
Packaging dimensions (mm)	285 x 325 x 395	
Total weight with packaging (kg)	3,8 kg	4,9 kg

External dimensions (mm)

RH-110
RH-210



Ref.	Accessories	PVP (€)
70036	Printer with cable PR6	---,--
36759	RS-232 to PC cable	---,--
36760	RS-232 cable to printer	---,--