

Zebra

Replacing the data cable between the bars

Quick Guide

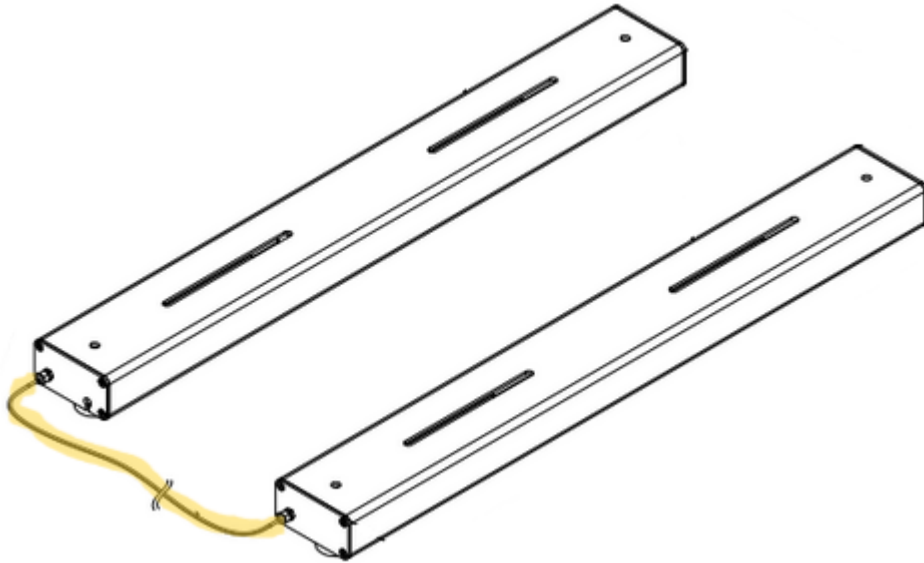
Index

1. Assembly.....	3
2. Removal of defective cable.....	3
3. Replacement of defective cable.....	4
a. Explanation of connection.....	4
b. Opening the junction box.....	5
c. Connecting new cable.....	6
4. Closing.....	7



1. Assembly

The Zebra data cable is connected between the two bars. To replace the cable, the scale must be turned over. The load cells and the cabling are located under the bars.



2. Removal of defective cable

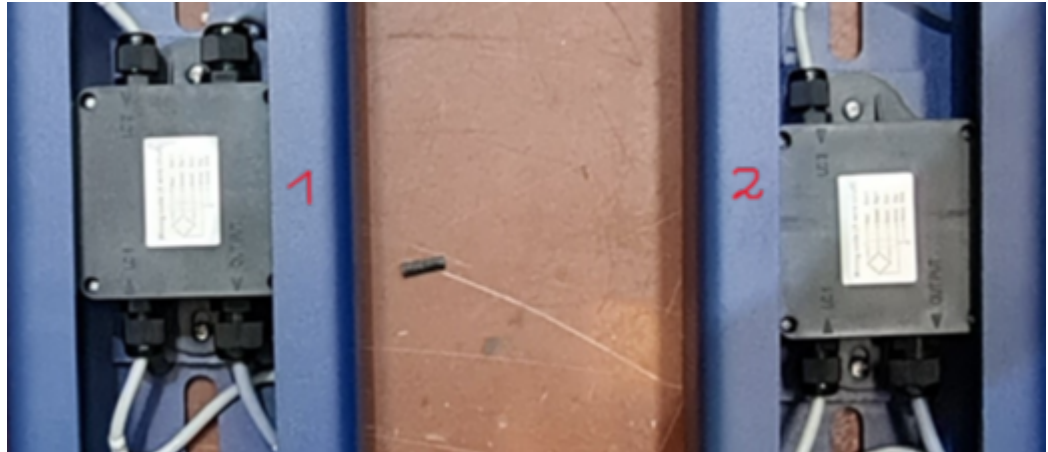
To replace the defective cable, the muffle (one on each bar) that secures the cable must be removed. Please unscrew these completely.



3. Replacement of defective cable

a. Explanation of connection

Each weighing bar contains a junction box in which the signals from the two load cells are received and processed.



The cable labeling is indicated on the junction box as follows:

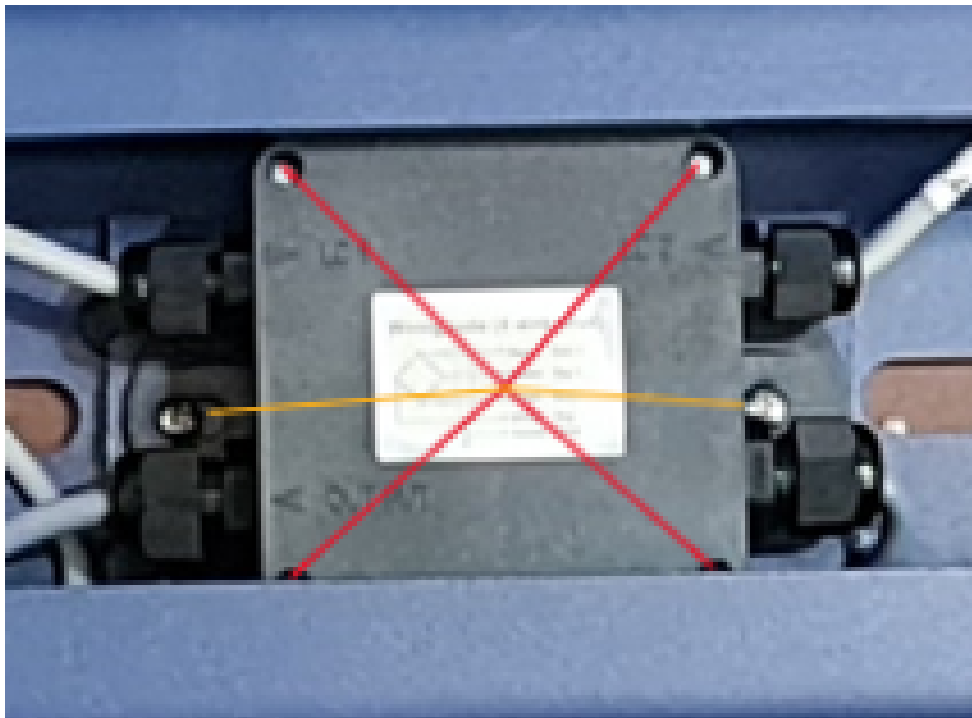


- **LC1** = Load cell 1
- **LC2** = Load cell 2
- **Output** = Data cable



b. Opening the junction box

The junction box is closed with 4 screws (marked in red). These must be unscrewed. If the cover cannot be opened, the junction box must be removed from the bars so that it can be taken out of the structure (with help of two additional screws, marked in orange). As in the previous step, the muffle must also be removed here in order to be able to remove the cable.

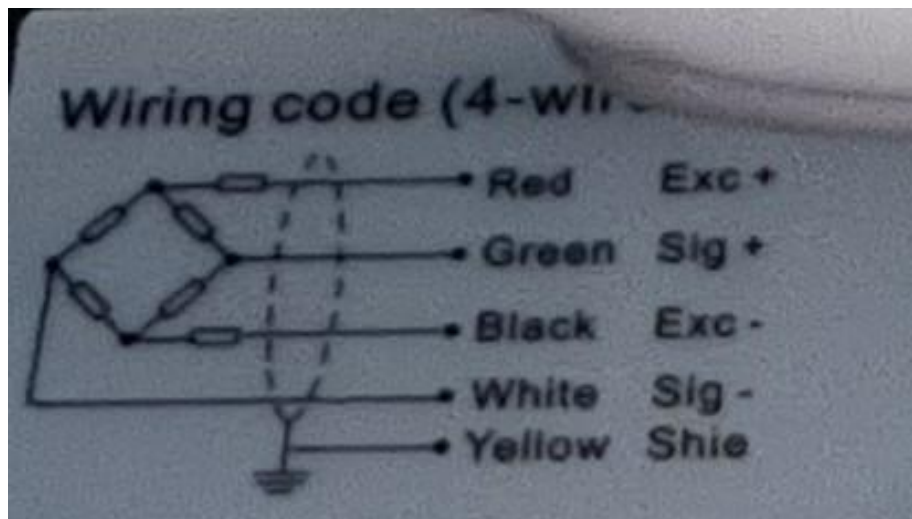


After removing the cover, a luster terminal is revealed. The defective cable can be disconnected here, and the new one connected in the same way.



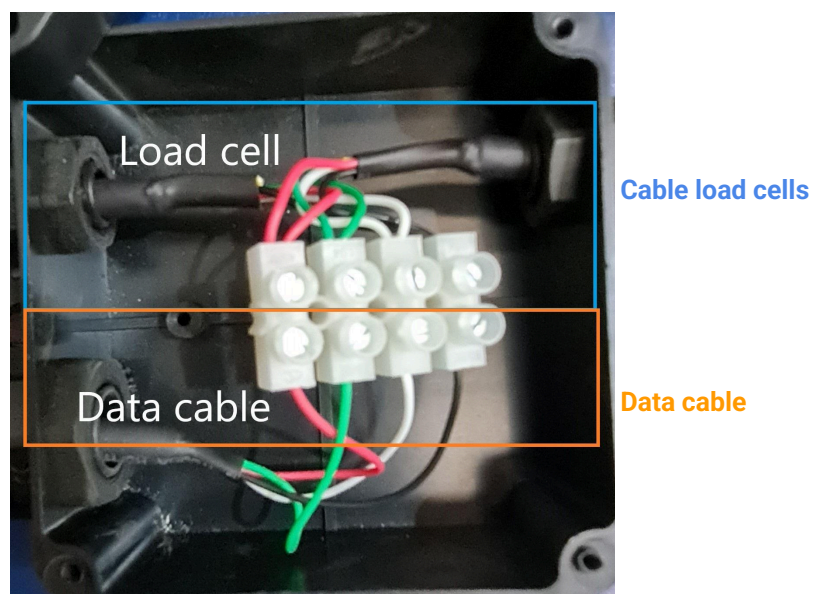
c. Connecting new cable

The following cables must be connected:



- **Red (Excitation +)** - Positive supply voltage of the measuring device
- **Green (Signal +)** - Positive output of the measuring device
- **Black (Excitation -)** - Negative supply voltage of the measuring device
- **White (signal-)** - Negative output of the sensor that supplements the measurement signal
- **Yellow (Shield)** - Shielding that reduces interference from the environment and improves the signal quality.

After opening the box, a luster terminal is revealed:



Disconnect the defective cable and insert the new one through the opening before connecting it.

4. Closing

After the cable has been installed, please close the junction box again. Turn the scale over again and close it. To complete the installation, we recommend recalibrating the scale.





Gram Group

Travessia Industrial 11,
08907 Hospitalet de Llobregat
Barcelona (Spain)

