

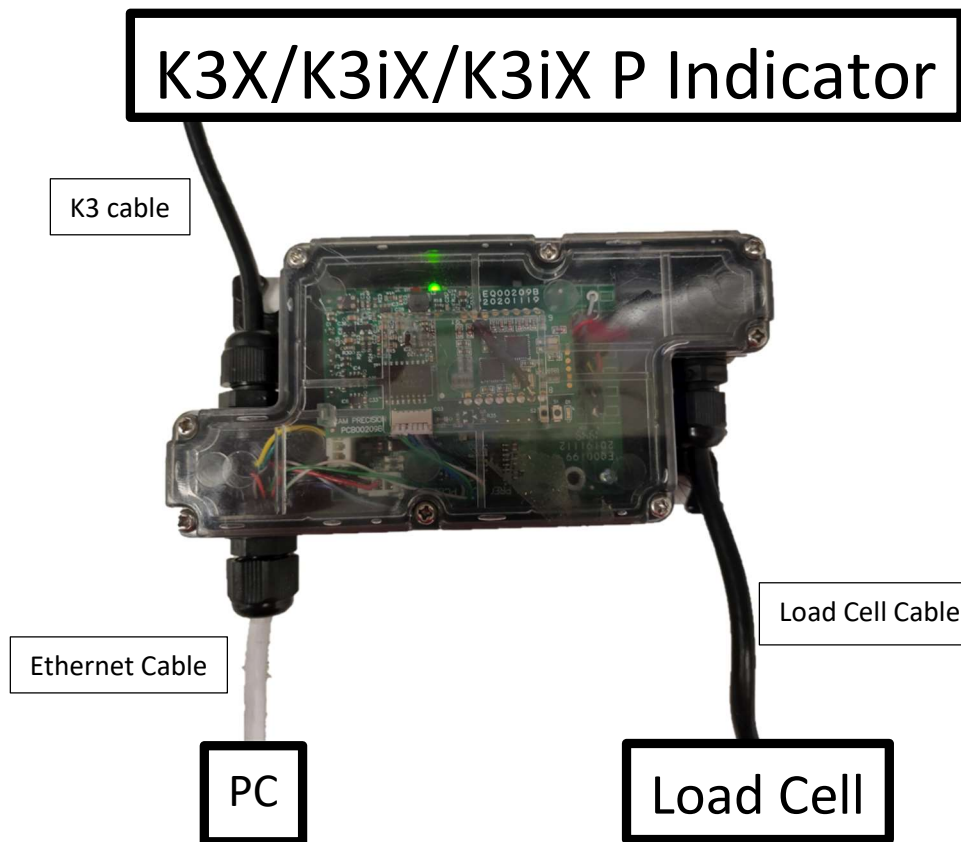
XTREM & 32377 ETHERNET CONNECTION FOR XTREM SETUP

Connecting a XTREM module through a local network using the equipment “32377 Ethernet connection for XTREM”.

Overview

1. Prepare and connect the equipment.
2. Setup the network at PC side.
3. Setup the “32377 Ethernet connection for XTREM”
4. Using PC-XTREM application in a local network.

1. Prepare and connect the equipment



Prepare and connect the equipment:

1. PC
2. Xtrem weighing module with “32377 Ethernet connection for XTREM” option.
3. Ethernet switch
4. Ethernet RJ45 cable

The Xtrem weighing module and the PC should be connected to the same ethernet switch that the PC or directly to the PC through the RJ45 cable.

2. Setup the network at PC side

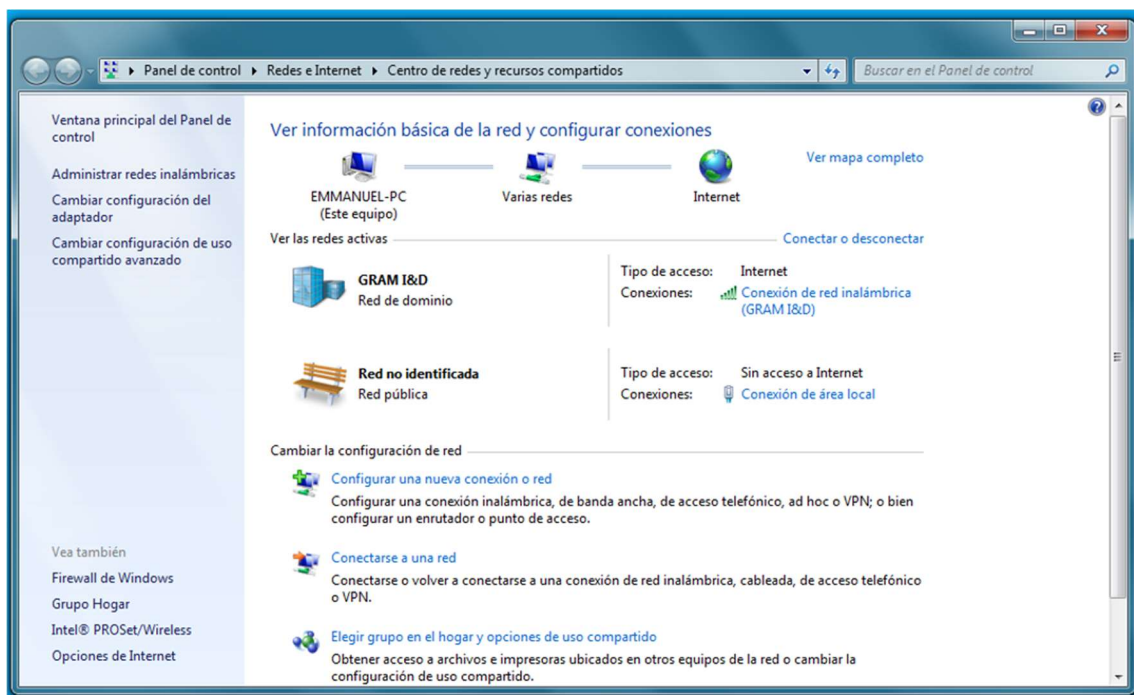
The “32377 Ethernet connection for XTREM” is delivered with the following default configuration:

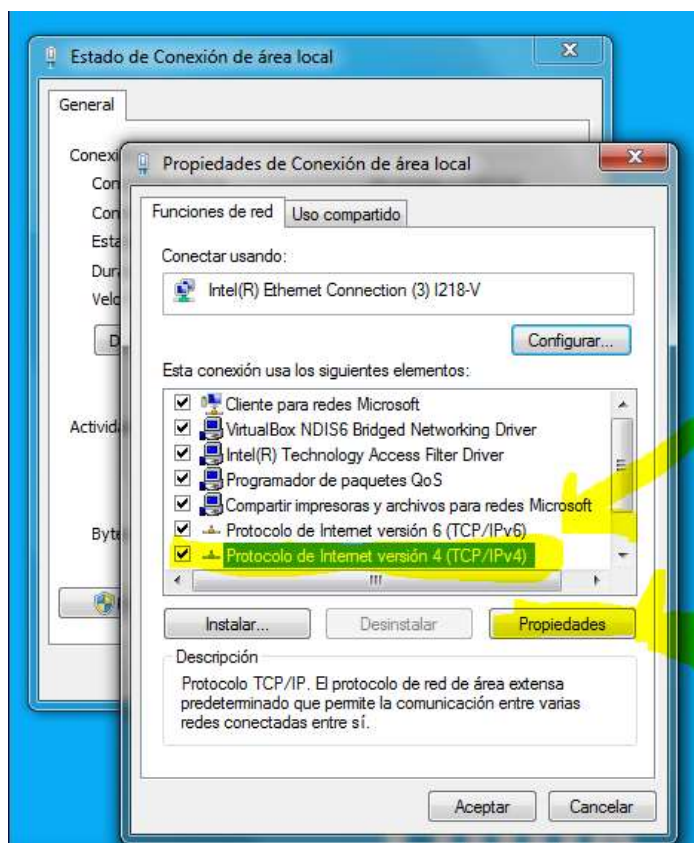
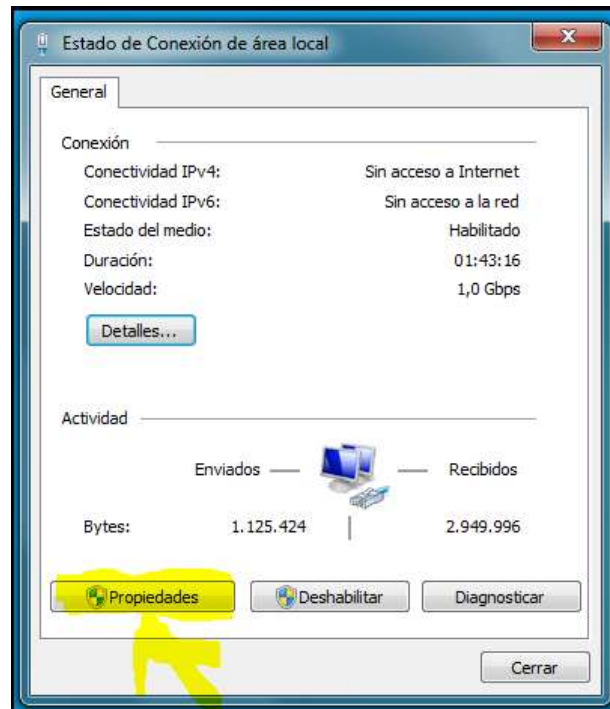
IP address	192.168.4.1
UDP Port (XTREM side)	4444
UDP Port (PC side)	5555
User	GRAM
Password	Gr@m1

To access the setup form of this device the first time, you must configure your PC network adapter with an IP address within the same range.

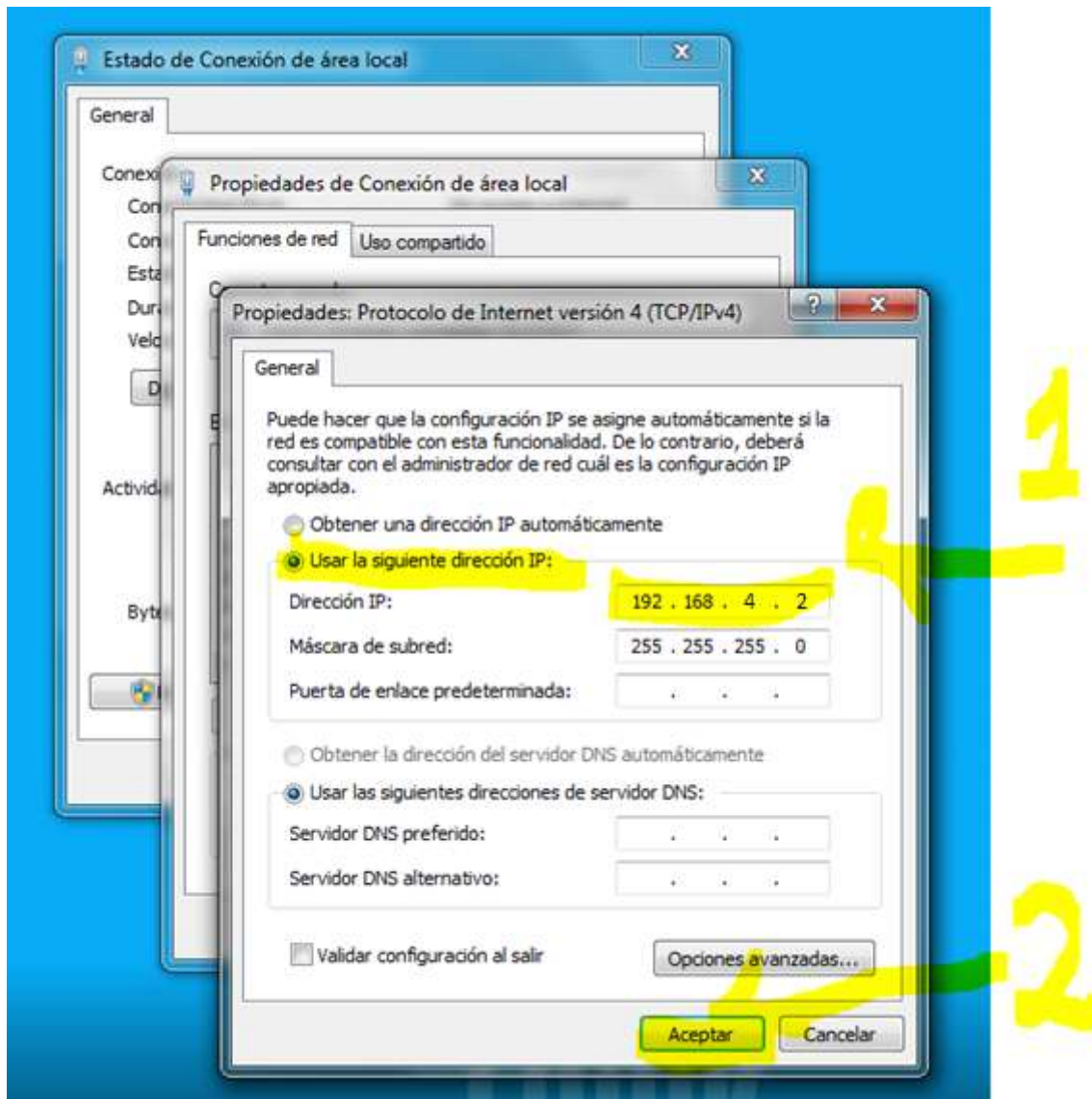
The procedure described below is for a Microsoft Windows 7 system.

Open the network settings windows in your PC and select the network adapter where you have connected the “32377 Ethernet connection for XTREM” module:





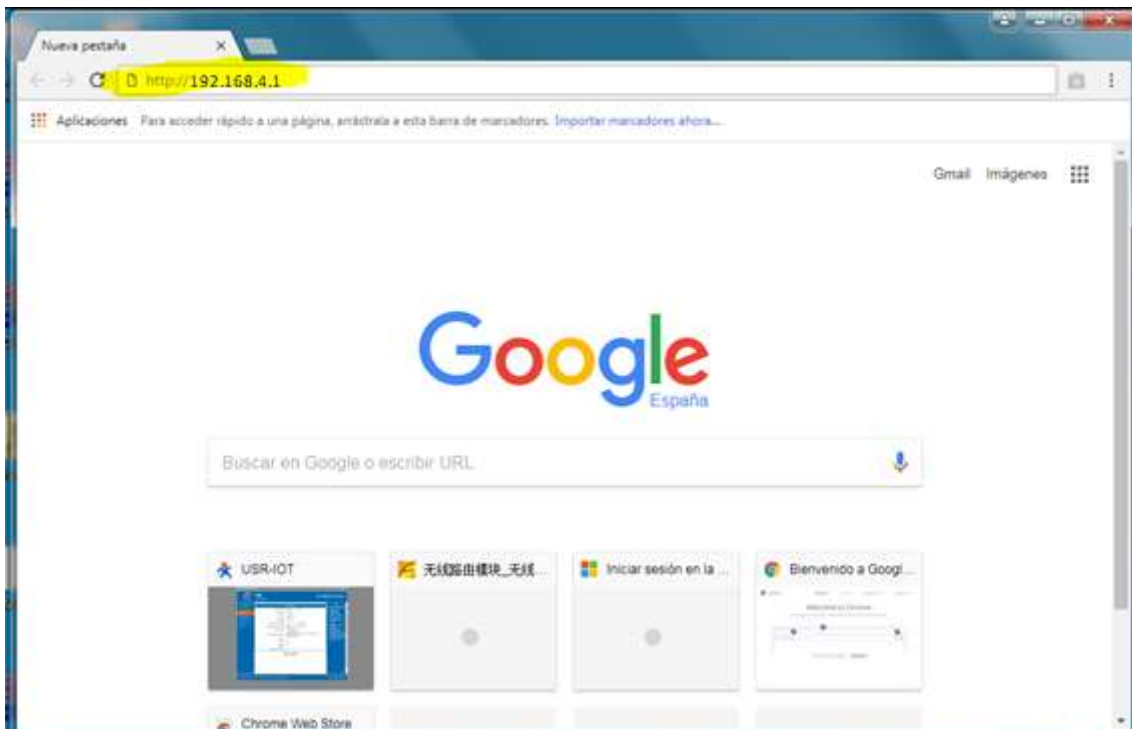
Once the next step is done the PC will probably lose the internet connection until the previous configuration is restored.



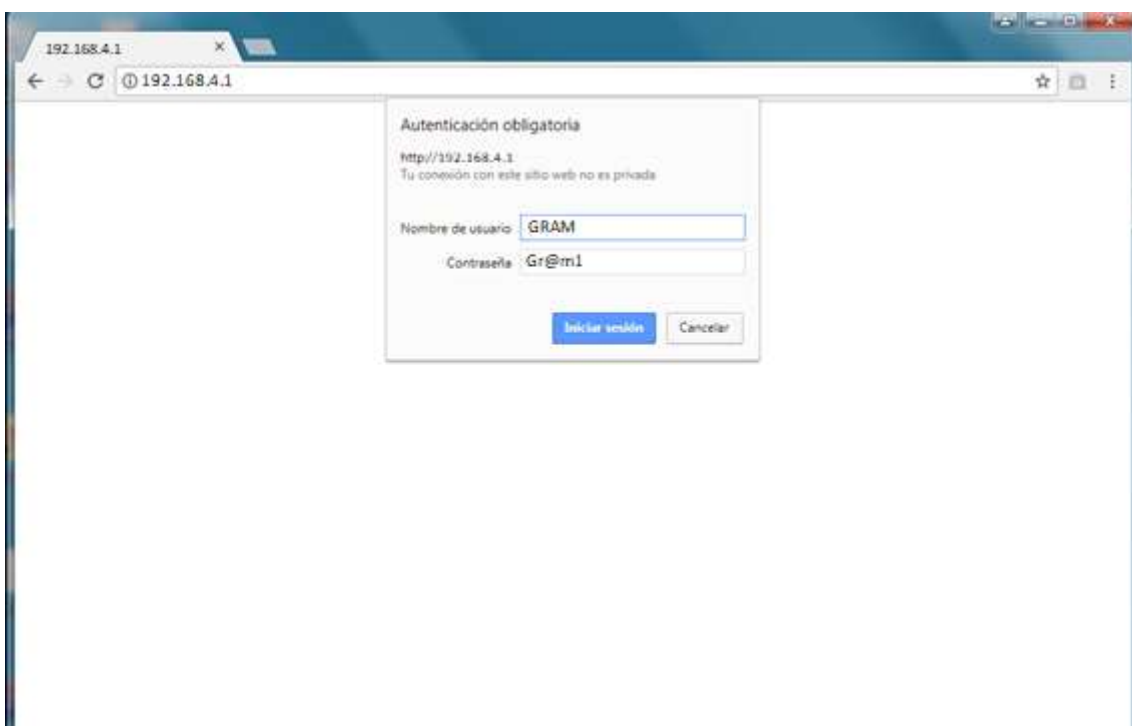
Now, you are ready to access the settings of the device from your PC using the http protocol.

3. Setup the “32377 Ethernet connection for XTREM”

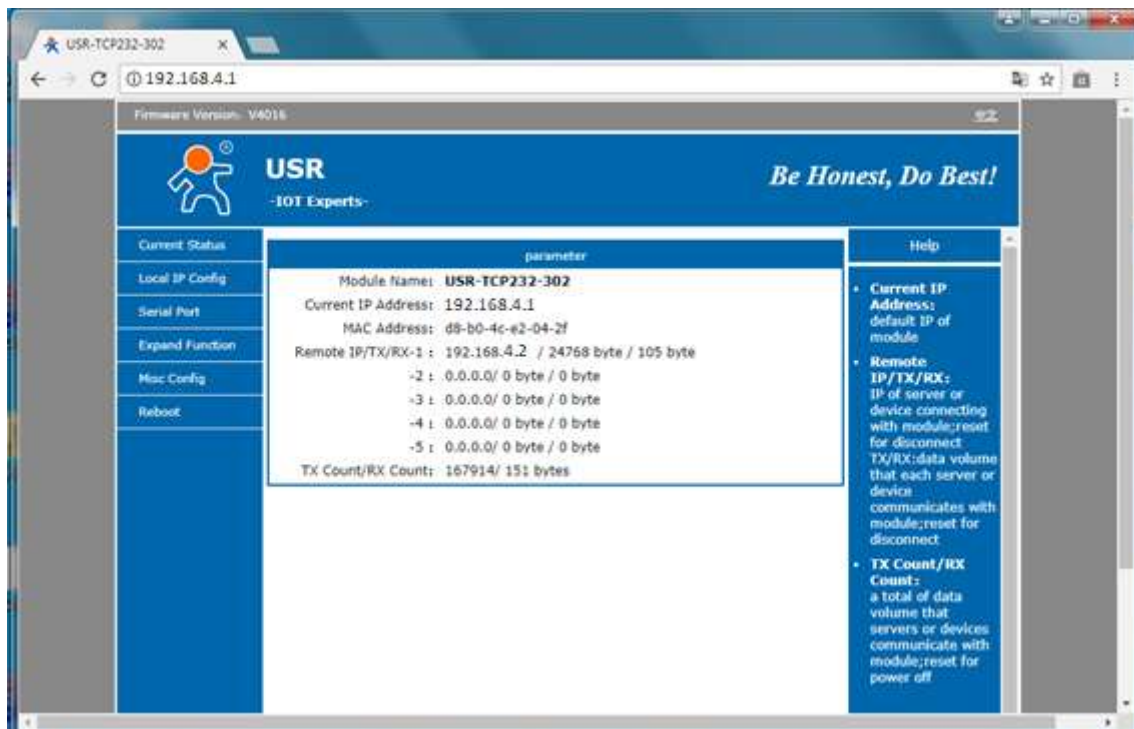
Open a web browser window and type the IP address 192.168.4.1:



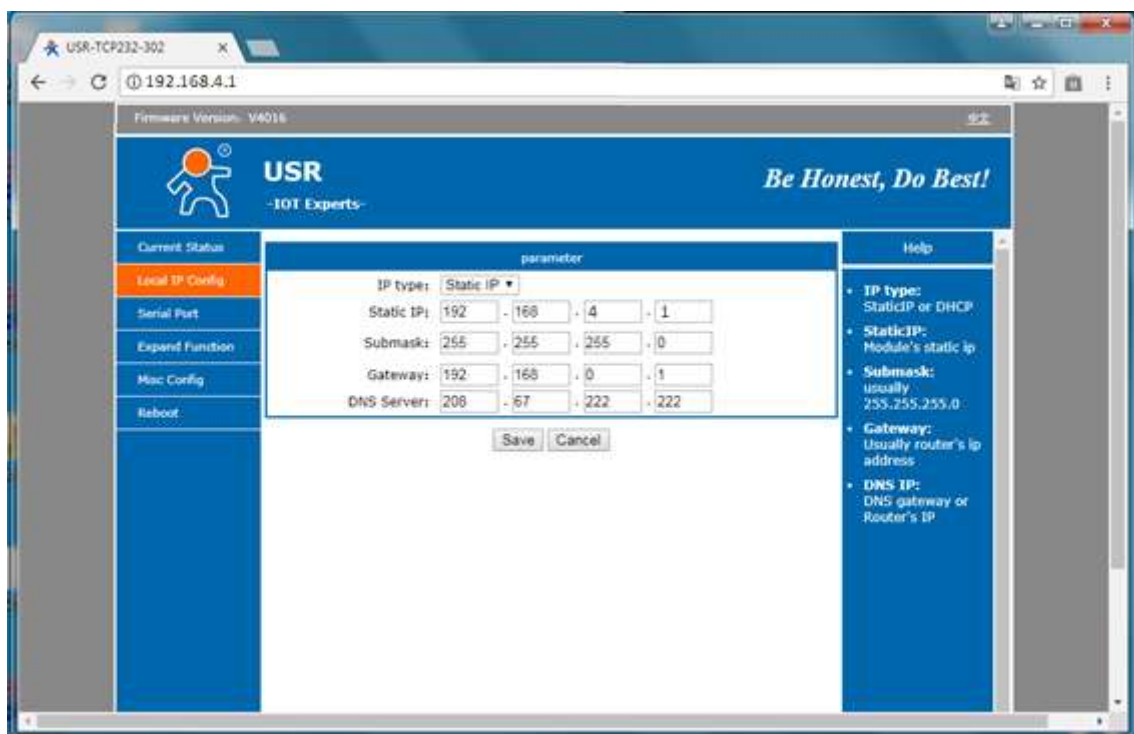
It will appear a log in window. As stayed before the administrator account is “GRAM” and the password “Gr@m1”.



The “32377 Ethernet connection for XTREM” settings form will appear in your browser:



At “Local IP Config” you can change the IP address of the converter. Be careful, because once you do it, it will not be possible to connect the device using the default IP address anymore.



4. Using PC-XTREM application in a local network

On first time running the PC-XTREM application is needed to activate the “Explore network” switch:

1. Click the settings button on top of the program window.
2. Choose the “Connect” tab onto the left-
3. Switch “Explore Network” to the “Yes” position.
4. Click the “refresh” button on top of the program window, next to the “settings” button.
5. The program will scan your network looking for any Xtrem scale connected. On first time, the system will open a window prompting you to allow the PC-XTREM program access to the network: is needed to allow access to the program at this point.

