

GRAM K3i Scorpion AI



MADE IN
BARCELONA

BCN



Minimal effort

- Low-profile platform for weighing European pallets.
- Weight can be assessed by simply lifting the pallet 72 mm off the floor with no need for ramps.
- With wide front castors and handle for rapid location transfer.
- Corrosion resistant; designs are available in AISI 304 and AISI 316 for extreme conditions.
- Check and sort products by weight using our 3-colour display..
- Customisable ticket or label header and footer, also with date and time.
- Polished finish with compressed glass microspheres.

Functions:

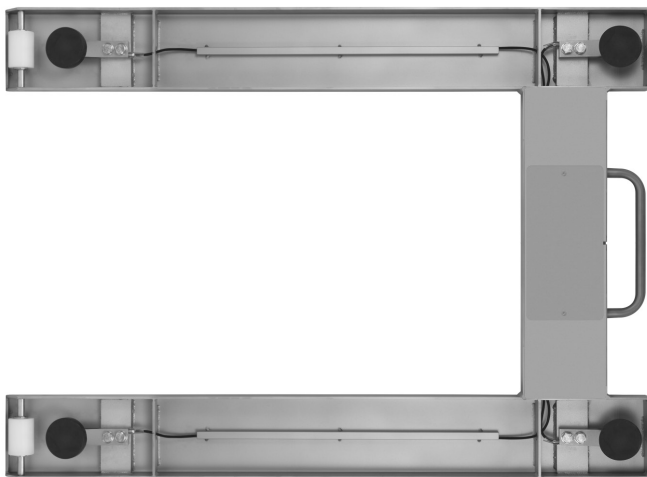
- Memory for 20 preset tares.
- Accumulation of weighings with aggregation.
- Memory for 100 items with alphanumerical code.
 - Piece-counting function with unit weight memory, up to 100 items.
 - Classification or verification by weight with viewing in 3 bright colours.
 - Customisable ticket or label header and footer, also with date and time.
 - GMP/GLP, Wireless, USB Direct, EX Link.





Ergonomics

With a wide handle for easy and safe shifting.

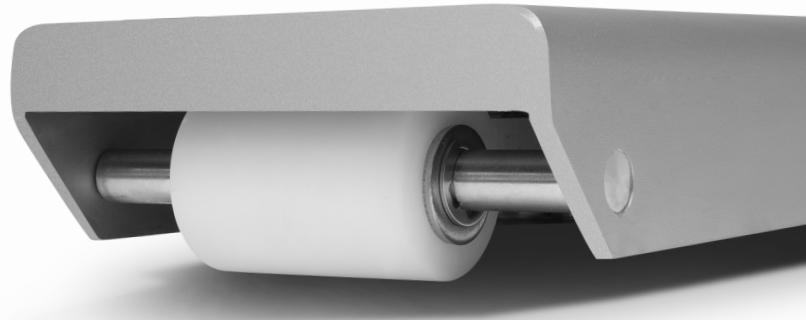
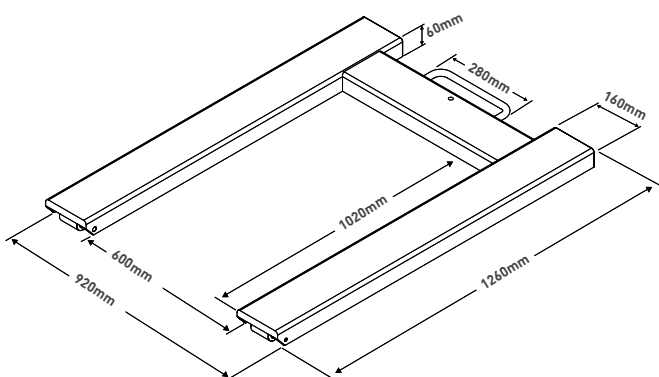


Durability

Designed with protected cabling for durable use.

External dimensions (mm)

K3 Scorpion



Mobility

Equipped with wide nylon castors and bearings for smooth location transfer.



Strength

Manufactured with a 6 mm stainless steel structure and optional stainless steel IP-69K load cells.

| Model | K3i Scorpion AI 304 1,5T | K3i Scorpion AI 316 1,5T |
|----------------------------------|--|--------------------------------|
| Reference | 6543 | 70888 |
| Capacity | 1500 kg | |
| Resolution | 500 g | |
| Weight units | g, kg, lb, oz | |
| Display | Back-lighted LCD | |
| Acoustic warning | Yes | |
| Connectivity | RS 232-C, Wireless (optional) | |
| Transmission rate | 1200, 2400, 4800, 9600, 19200, 38400, 57600, 115200 Baud | |
| Bit number and parity | 8 Bits, no parity, 1 bit stop | |
| Power | 230 V / 50 Hz (Euro) 11 V AC | |
| Battery | 6V-5AH; Service time 25/60 hours depending on use | |
| Working temperature | +5°C / +35°C | |
| Sheet thickness | 5 mm | |
| Structure | AISI 304 stainless steel | AISI 316 stainless steel |
| Load cells | 4 stainless steel cells | |
| Count box | IP68, AISI 304 stnless steel | IP68, AISI 316 stainless steel |
| Platform dims. (mm) | 920 x 1290 | |
| Minimum height | 71 | |
| Maximum height | 86 | |
| Net weight of platform (kg) | 50 | |
| Package dims. (mm) | 950 x 1300 x 92 | |
| Total weight with packaging (kg) | 71 | |



► K3i Printer INDICATOR

| Ref. | Model | Resolution |
|-------|-------------|-------------------|
| 60960 | K3i Printer | 100,000 divisions |



► SC2 INDICATOR

| Ref. | Model | Resolution |
|------|---------|------------------|
| 5305 | SC2 (*) | 30,000 divisions |



► K4i INDICATOR

| Ref. | Model | Resolution |
|-------|------------------|----------------------|
| 60136 | K4i (*) M | 30,000 / 60,000 div. |



► K2 INDICATOR

| Ref. | Model | Resolution |
|-------|-----------------|------------------|
| 60018 | K2 (*) M | 60,000 divisions |



► K2E INDICATOR

| Ref. | Model | Resolution |
|-------|------------------|------------------|
| 60020 | K2E (*) M | 60,000 divisions |



► K2N INDICATOR

| Ref. | Model | Resolution |
|-------|------------------|------------------|
| 60019 | K2N (*) M | 60,000 divisions |



► K2P INDICATOR

| Ref. | Model | Resolution |
|-------|------------------|------------------|
| 60022 | K2P (*) M | 60,000 divisions |



► VERIFICATION

| Ref. | Certifications |
|------|---|
| 8031 | CE verification certificate from 601 kg to 1500 kg (*) M |

| Ref. | Certifications |
|------|---|
| 8029 | ISOCAI certificate from 601 kg to 1500 kg |

M (*) For verified units, "M" indicator and Verification certificate have to be included.

► INDICATOR OPTIONS

| Ref. | Model |
|-------|---------------------------------|
| 32330 | 3-relay output (K3, K3i) |
| 32277 | Second RS-232 output (K3, K3i) |
| 3776 | Wireless K connection (K3, K3i) |
| 60033 | RS-232 (K2, SC2) |
| 33772 | RTC Board (K3, K3i) |

► COLUMN BRACKETS / BASES

| Ref. | Model |
|-------|---|
| 33207 | ABS swivel base |
| 3803 | Stainless steel U tube base |
| 32278 | Stainless steel U wall support |
| 31661 | Wall support in painted steel with ABS swivel joint |



| Ref. | Model |
|-------|--------------------------------------|
| 3804 | Painted steel base with column |
| 3805 | Stainless steel base with column |
| 71337 | Stainless steel base with K4i column |



Indicator not included.

► CABLES

| Ref. | Model |
|-------|------------------------------------|
| 61084 | Direct K USB cable |
| 33205 | RS-232 cable to RD3 or PC K, 1.5 m |
| 3738 | RS-232 cable to RD3 or PC K, 4 m |
| 32294 | RS-232 cable to K Printer |
| 36767 | RS-232 cable to PC (K2, SC2) |
| 36766 | RS-232 cable to Printer (K2, SC2) |
| 36857 | RS-232 cable to PC (K4i) |
| 36858 | RS-232 cable to Printer (K4i) |



► PERIPHERALS

| Ref. | Model |
|-------|------------------------------------|
| 70814 | Q2 labelling machine |
| 70034 | PR4 printer (RS-232) |
| 70035 | PR4W printer (Wireless) |
| Ref. | Accessories for labelling machines |
| 36904 | Q2 70x58mm label roll |



Q2 labelling machine.



PR4 printer.

| Ref. | Model |
|------|------------------------------------|
| 5263 | RD3 repeater indicator (RS-232) |
| 6950 | RD3W repeater indicator (Wireless) |



| Ref. | Model |
|-------|-------------------|
| 32332 | Tare pedal (****) |



| Ref. | Model |
|-------|------------------------------------|
| 60210 | LED traffic light with relay board |



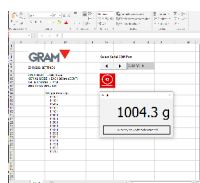
► PLATFORM ACCESSORIES

| Ref. | Model |
|-------|-------------------------------------|
| 36948 | C3 cells nickel-plated steel IP67 |
| 36949 | C3 cells stainless steel IP68 |
| 70801 | C3 cells stainless steel IP69K |
| 36950 | C3 cells stainless steel IP69K Plus |



► SOFTWARE

| Ref. | Model |
|------|------------------------------|
| 3792 | EX-Link software for PC (**) |



| Ref. | Model |
|------|-------------------------------|
| 4877 | PW-Link software for PC (***) |



(**) Compatible with Z3, K3, K3i, S2, S3-RS, S5i-RS.

(***) Compatible with Z3, K3, K3i, K3i Printer, MK3, MK3 Printer, S2, S3, S5i, S7i.

(****) Compatible with K2, K3, K3i, K3i Printer, MK3, MK3 Printer, S2, S3, S5i, S7i.