

## QUICK START GUIDE

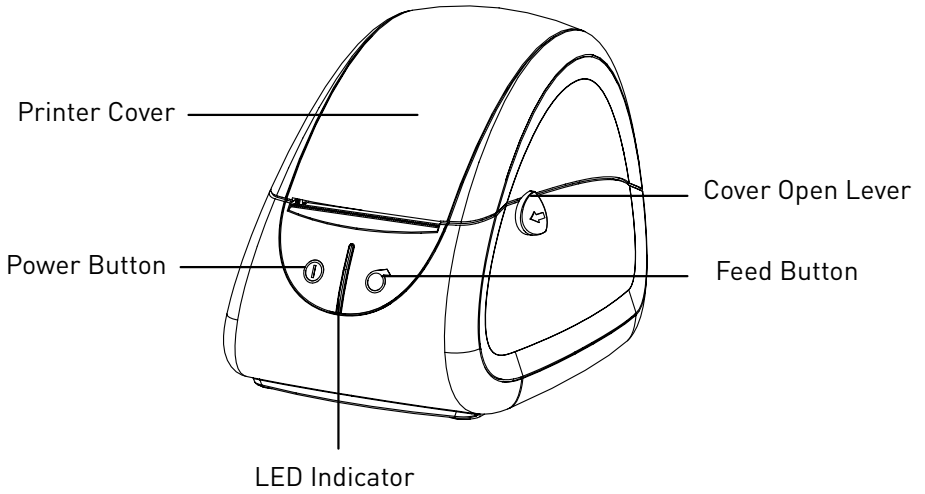
### PACKAGING

- ① Printer.
- ② Cables Fastener.
- ③ Power Cord.
- ④ Power Adapter.
- ⑤ USB Cable (Optional).
- ⑥ Serial Cable (Optional).
- ⑦ Paper Roll (Optional).
- ⊕ Accompanying documentation.

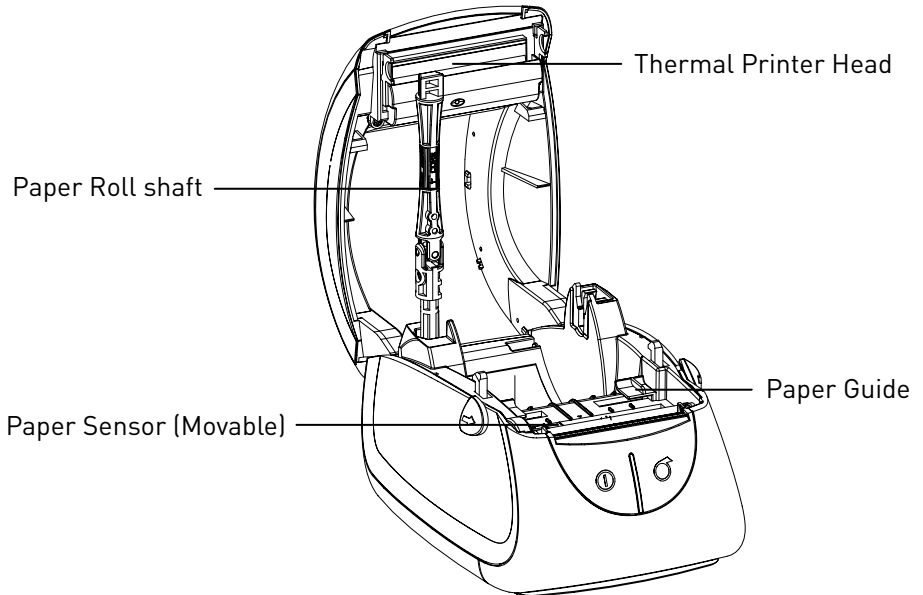
# APPEARANCE AND COMPONENTS

---

## Front

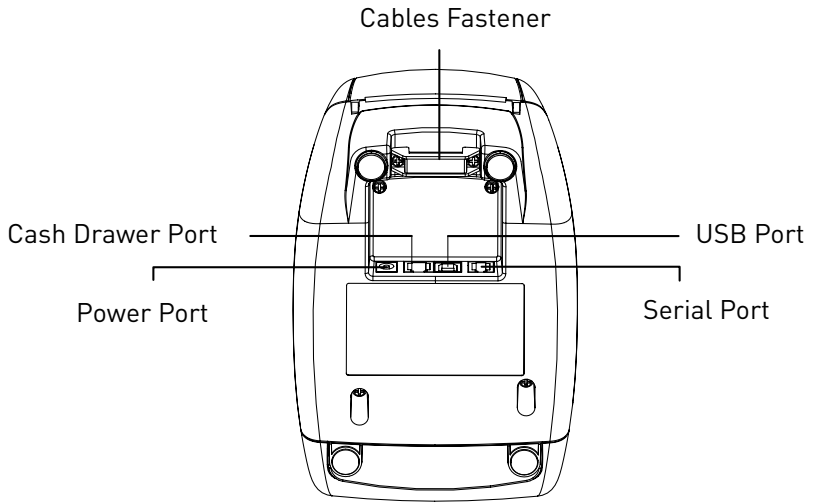


## Inside

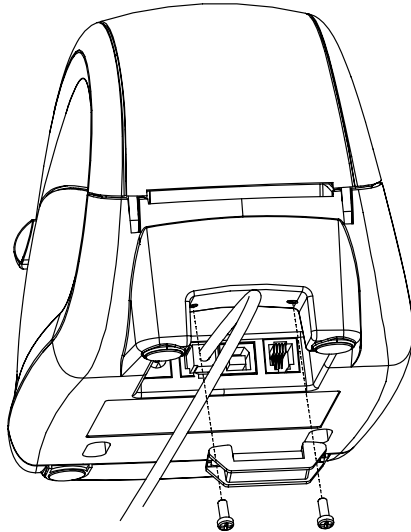


---

## Rear

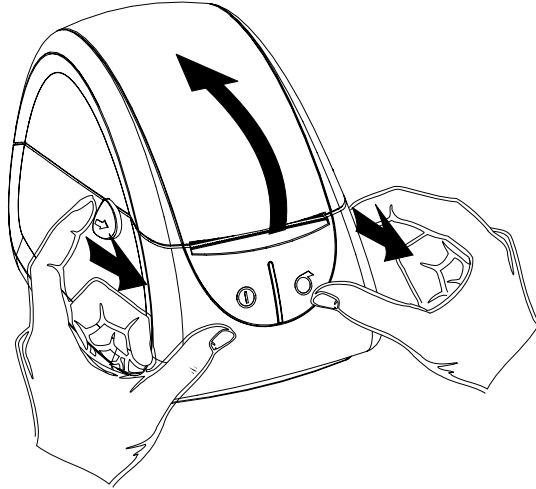


## Install the cables fastener

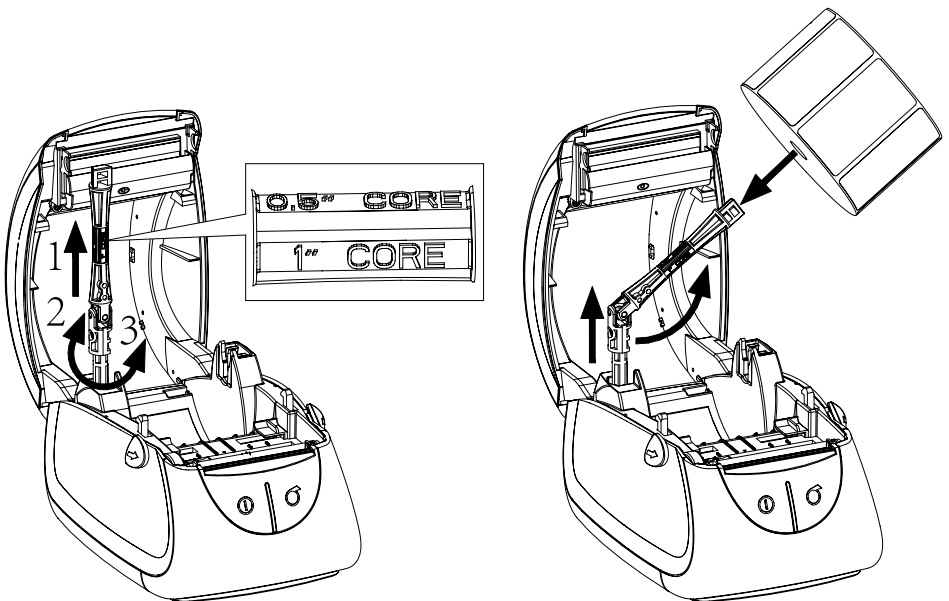


## LOADING PAPER

1. Pull the cover open lever towards you and lift the cover.

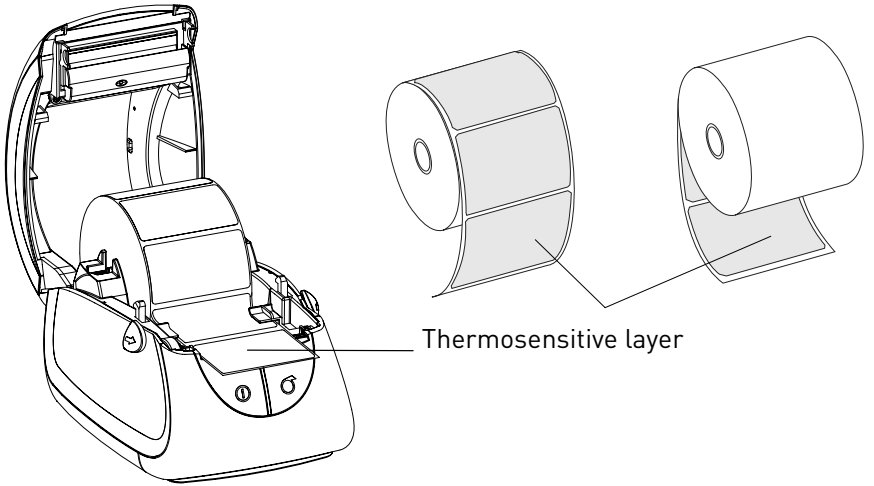


2. Firstly, pull up the paper roll shaft. Then adjust the shaft according to the internal diameter of paper roll (There is detailed illustration which is about internal diameter of paper roll on the shaft). Next, install the paper roll and fix the shaft. (C counts).

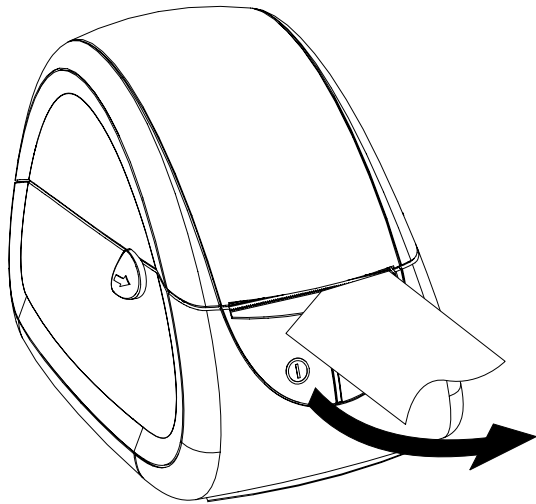


**Note:** Please do center the sensor while not printing with black mark paper.

3. Pull out some paper roll,open the paper guides to the max width and pass the paper through the paper guides , then adjust the paper guides to the paper width.

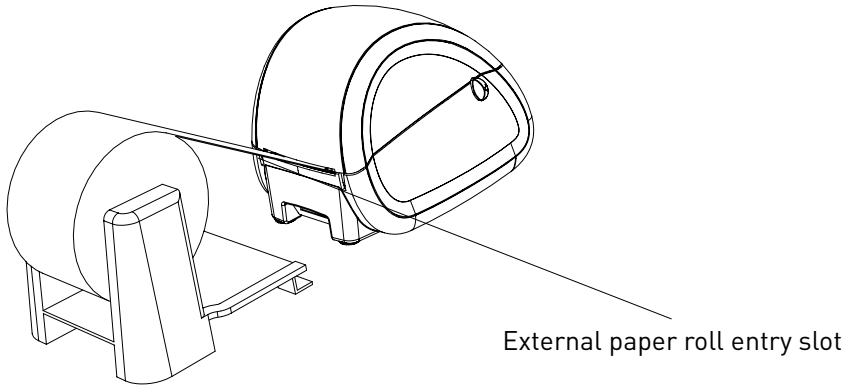


4. Press down the center of the printer cover to close the cover then tear off the excess paper.



## LOADING EXTERNAL PAPER ROLL

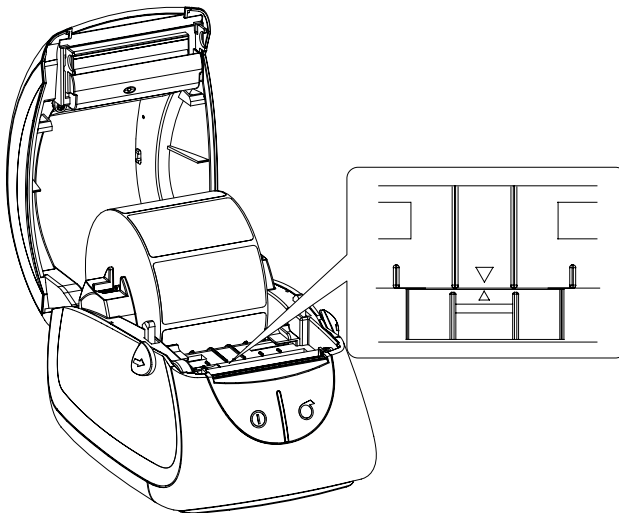
---



## PREPARING FOR LABEL PRINTING

---

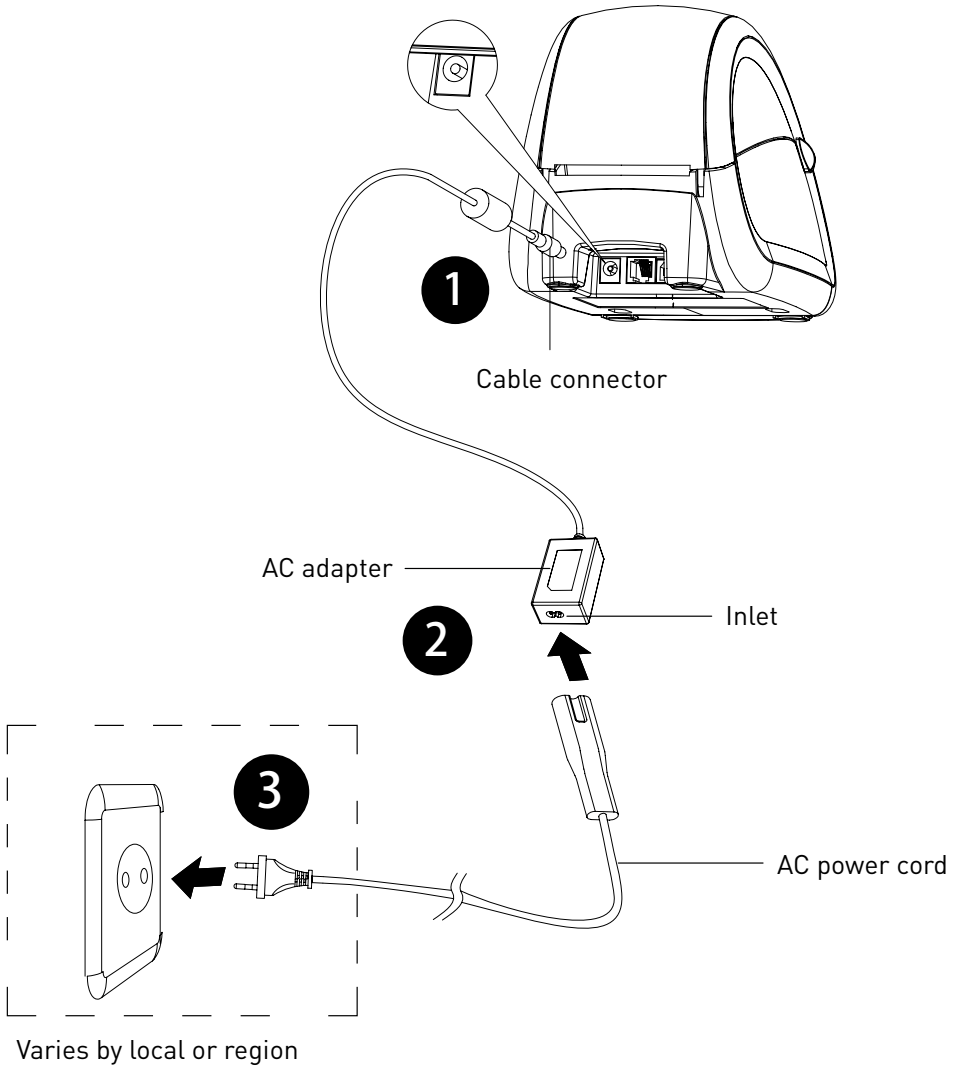
The movable paper sensor must be fixed as shown below to make sure that paper sensor can detect the paper status and label location under label printing mode.



## CONNECTING POWER

---

1. Connect the AC adapter with power interface.
2. Connect the AC adapter with power cord.
3. Plug the other side of power cord into the socket outlet.



**Note: Windows Driver Installatiion please see User Manual.**



Gram Precision S.L.  
Travesía Industrial, 11 · 08907  
Hospitalet de Llobregat · Barcelona (Spain)  
Tel. +34 902 208 000 · +34 93 300 33 32  
Fax +34 93 300 66 98  
[comercial@gram.es](mailto:comercial@gram.es)  
[www.gram-group.com](http://www.gram-group.com)