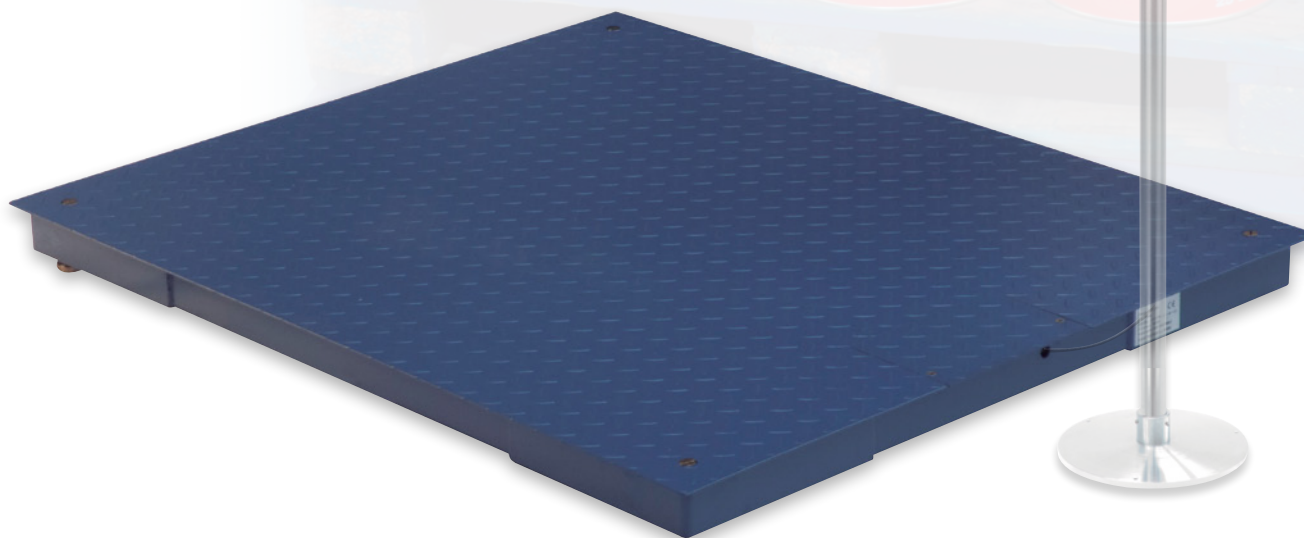


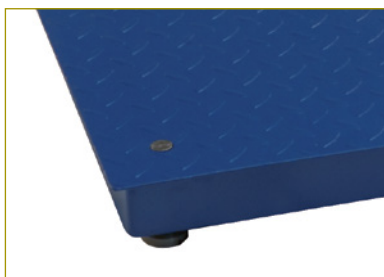
# series XTiger



**XTiger.** Light, with sufficient hardness floor scale.



- Robust platform with four load cells.
- Optional pit frame installations.
- Optional access ramp.
- Five sizes of platforms.
- Capacities of 1500 and 3000 kg.
- Painted steel monoblock structure.
- Nickel steel load cell with IP-67 protection and OIML Approval.
- ABS junction box with IP-67 protection.
- Connecting to GRAM indicators.



## Epoxy painted steel structure

The XTiger scale is made of epoxy painted steel. The epoxy painting is very resistant; it is the best option for an intensive and daily use.

## Optional access ramp

XTiger and its low profile access ramp (optional) make it easier to drive over the scale and weigh load on wheels.

## Utilizaciones principales

The low profile platform **XTiger** is perfectly suitable for all types of applications: production, reception, shipping goods, orders preparation, etc.

The Series **XTiger** is available in five platform sizes: 1200x1000, 1200x1200, 1500x1200, 1500x1500, 2000x1500 mm), in order to better meet your needs.

The resistant finish in epoxy allows using the scale in both, dry and wet environments. An epoxy finish converts the platform into a waterproof surface, very easy to clean, very resistant to acids, shock, scratches and detergents products.

The adjustable feet allow leveling the platform if there are irregularities in the floor. They ensure also an optimal force transmission to the load cells.

Four load cells, placed one in every corner, allow very accurate weighing. Those load cells, typical model H8C Rebel C3, are made of nicked steel with IP-67 protection and can be used in applications where Legal Metrology is needed.

The construction of open structure facilitates the maintenance. In the **XTiger** series everything is designed to respond to your hygienic and cleaning requirements.

The **XTiger** platform can be assembled and connected to all indicators made by GRAM PRECISION.

## Adjustable feet

The adjustable feet allow leveling the platform despite irregularities in the floor. They also ensure an optimal force transmission to the load cells.



Optional integral pit frame installation available for all models.

## Available options

- CS-1 column
- Connection cable extension
- Epoxy painted steel access ramp
- Integral pit frame installation available for all models except XTiger-2015
- Platen frame
- Stainless steel wall support
- Indicators in Legal Metrology: K2, K2E, K2N, K2EN, K2P and K4i.
- Indicators for internal use: K3, K3i, K1, K5i, IVP, IKP and SC2.
- PR3/PR3-W printers..
- RD3/RD3-W remote indicator.

## Características técnicas

Model	XTiger 1210-1.5	XTiger 1210-3	XTiger 1212-1.5	XTiger 1212-3	XTiger 1512-1.5	XTiger 1512-3	XTiger 1515-1.5	XTiger 1515-3	XTiger 2015-1.5	XTiger 2015-3
Reference	60682	60683	60684	60685	60686	60687	60688	60689	60749	60690
Plate thickness	3/4mm									
Capacity	1500 kg	3000 kg	1500 kg	3000 kg	1500 kg	3000 kg	1500 kg	3000 kg	3000 kg	3000 kg
Readability	500 g	1000 g	500 g	1000 g	500 g	1000 g	500 g	1000 g	1000 g	1000 g
Structure	Painted steel									
Load cells	H8C Rebel OIML C3 Class									
Junction box	ABS IP-67									
Pan size (mm)	1200 x 1000		1200 x 1200		1500 x 1200		1500 x 1500		2000 x 1500	
Minimal height (mm)	93									
Maximal height (mm)	103									
Total net weight (kg)	56		64		77		95		128	

## External dimensions (mm)

