

# GRAM K3i Zebra AI



MADE IN  
BARCELONA

BCN



## Adaptable weighing bars

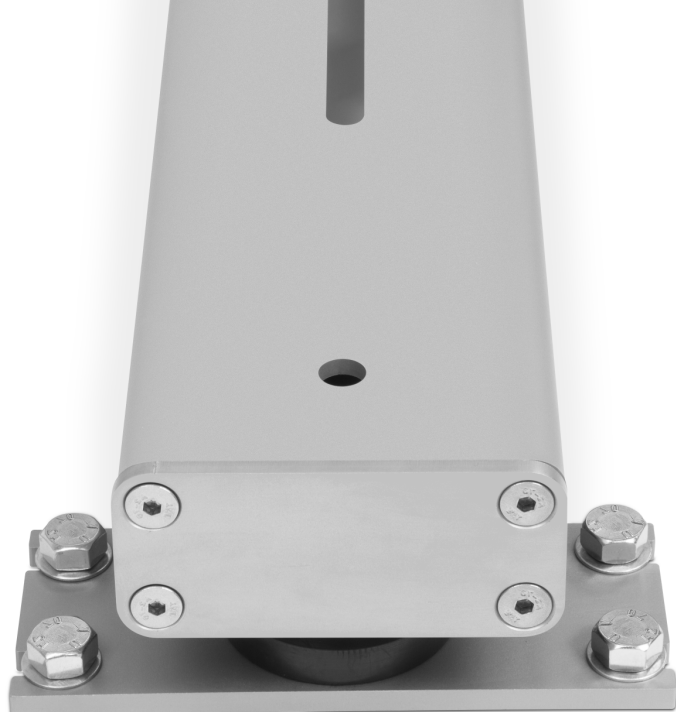
- For weighing long objects easily.
- For weighing stiff structures, animal cages. Built-in top anchoring piece.
- Manufactured in AISI 304 and AISI 316 stainless steel. For heavy-duty use.
- Optional load sensors with IP69K protection. Resistant to high-pressure cleaning.
- Side openings for maintenance or height adjustment.
- Polished finish with compressed glass microspheres and varnish protection.



### Functions:

- Memory for 20 preset tares.
- Accumulation of weighings with aggregation.
- Memory for 100 items with alphanumerical code.
  - Piece-counting function with unit weight memory, up to 100 items.
  - Classification or verification by weight with viewing in 3 bright colours.
  - Customisable ticket or label header and footer, also with date and time.
  - GMP/GLP, Wireless, USB Direct, EX Link.



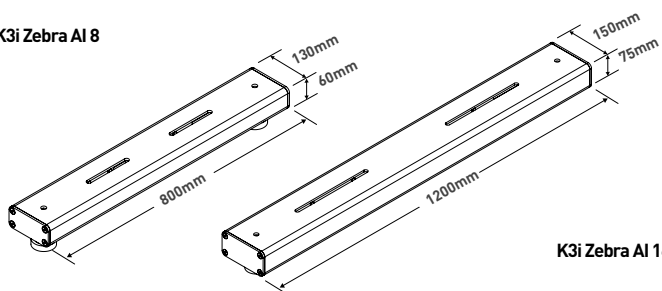


### Fixed assembly

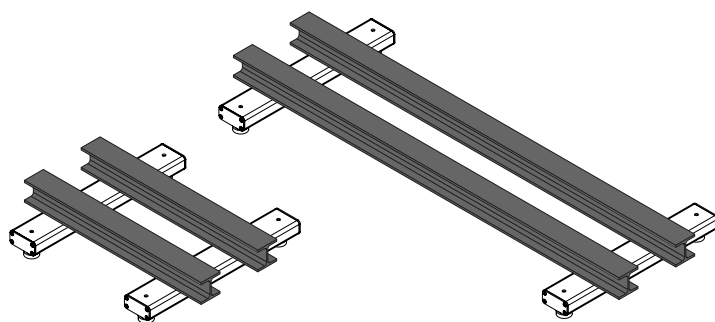
Optional plates allow for fixed assembly.

### Dimensiones exteriores (mm)

K3i Zebra AI 8



K3i Zebra AI 16



### Adaptable

A high-capacity weight scale ready for installation in any structure.

### No limits

Capable of weighing very long objects, practically no length limit (up to 4 ; longer length available optionally).

Model	K3i Zebra AI 304 8-3T	K3i Zebra AI 316 8-3T	K3i Zebra AI 304 12-3T	K3i Zebra AI 316 12-3T
Reference	6796	70901	6797	70900
Capacity	1500 kg			
Resolution	500 g			
Weight units	g, kg, lb, oz			
Display	Back-lighted LCD			
Acoustic warning	Yes			
Connectivity	RS 232-C, Wireless (optional)			
Transmission rate	1200, 2400, 4800, 9600, 19200, 38400, 57600, 115200 Baud			
Bit number and parity	8 Bits, no parity, 1 bit stop			
Power	230 V / 50 Hz (Euro) 11 V AC			
Battery	6V-5AH; Service time 25/60 hours depending on use			
Working temperature	+5°C / +35°C			
Sheet thickness	5 mm			
Structure	AISI 304 stainless steel	AISI 316 stainless steel	AISI 304 stainless steel	AISI 316 stainless steel
Load cells	4 células inoxidables			
Platform dims. (mm)	130 x 800		150 x 1200	
Minimum height	105		105	
Maximum height	115		115	
Net weight of platform (kg)	12 x 2u.		25 x 2u.	
Package dims. (mm)	820 x 280 x 135		1220 x 320 x 135	
Total weight with packaging (kg)	25		52	



## ► K3i Printer INDICATOR

Ref.	Model	Resolution
60960	K3i Printer	100,000 divisions



## ► SC2 INDICATOR

Ref.	Model	Resolution
5305	SC2 (*)	30,000 divisions



## ► K4i INDICATOR

Ref.	Model	Resolution
60136	K4i (*) <b>M</b>	30,000 / 60,000 div.



## ► K2 INDICATOR

Ref.	Model	Resolution
60018	K2 (*) <b>M</b>	60,000 divisions



## ► K2E INDICATOR

Ref.	Model	Resolution
60020	K2E (*) <b>M</b>	60,000 divisions



## ► K2N INDICATOR

Ref.	Model	Resolution
60019	K2N (*) <b>M</b>	60,000 divisions



## ► K2P INDICATOR

Ref.	Model	Resolution
60022	K2P (*) <b>M</b>	60,000 divisions



## ► VERIFICATION

Ref.	Certifications
8031	CE verification certificate from 601 kg to 1500 kg (*) <b>M</b>

Ref.	Certifications
8029	ISOCAI certificate from 601 kg to 1500 kg

**M** (\*) For verified units, "M" indicator and Verification certificate have to be included.

## ► INDICATOR OPTIONS

Ref.	Model
32330	3-relay output (K3, K3i)
32277	Second RS-232 output (K3, K3i)
3776	Wireless K connection (K3, K3i)
60033	RS-232 (K2, SC2)
33772	RTC Board (K3, K3i)

## ► COLUMN BRACKETS / BASES

Ref.	Model
33207	ABS swivel base
3803	Stainless steel U tube base
32278	Stainless steel U wall support
31661	Wall support in painted steel with ABS swivel joint



Ref.	Model
3804	Painted steel base with column
3805	Stainless steel base with column
71337	Stainless steel base with K4i column



Indicator not included.

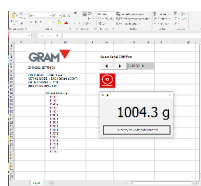
## ► CABLES

Ref.	Model
61084	Direct K USB cable
33205	RS-232 cable to RD3 or PC K, 1.5 m
3738	RS-232 cable to RD3 or PC K, 4 m
32294	RS-232 cable to K Printer
36767	RS-232 cable to PC (K2, SC2)
36766	RS-232 cable to Printer (K2, SC2)
36857	RS-232 cable to PC (K4i)
36858	RS-232 cable to Printer (K4i)



## ► SOFTWARE

Ref.	Model
3792	EX-Link software for PC (**)



Ref.	Model
4877	PW-Link software for PC (***)



## ► PERIPHERALS

Ref.	Model
70814	Q2 labelling machine
70034	PR4 printer (RS-232)
70035	PR4W printer (Wireless)
Ref.	Accessories for labelling machines
36904	Q2 70x58mm label roll



Q2 labelling machine.



PR4 printer.

Ref.	Model
5263	RD3 repeater indicator (RS-232)
6950	RD3W repeater indicator (Wireless)



Ref.	Model
32332	Tare pedal (****)



Ref.	Model
60210	LED traffic light with relay board



## ► PLATFORM ACCESSORIES

Ref.	Model
33745	Fixed Feet Plates (4u.)



Ref.	Model
36948	C3 cells nickel-plated steel IP67
36949	C3 cells stainless steel IP68
70801	C3 cells stainless steel IP69K
36950	C3 cells stainless steel IP69K Plus



(\*\*) Compatible with Z3, K3, K3i, S2, S3-RS, S5i-RS.

(\*\*\*) Compatible with Z3, K3, K3i, K3i Printer, MK3, MK3 Printer, S2, S3, S5i, S7i.

(\*\*\*\*) Compatible with K2, K3, K3i, K3i Printer, MK3, MK3 Printer, S2, S3, S5i, S7i.