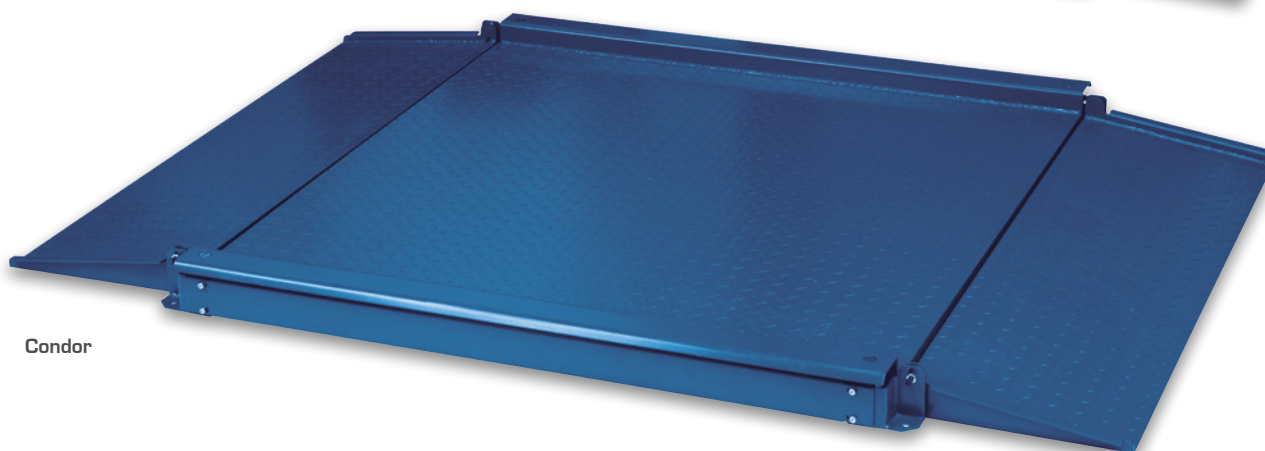


series CONDOR



Condor AI



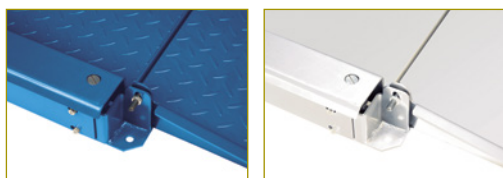
Condor



Our low-profile **Condor**: to weigh large charges easily and with no effort.



- Structure in epoxy painted steel or stainless steel.
- Very resistant upper structure.
- Robust platform with four OIML Approval load cells.
- Two folding access ramps included.
- Very low-profile charging area.
- Connecting to GRAM indicators.



Epoxy painted steel or stainless steel structure

The Condor Series offers two versions: one version of epoxy painted steel and another of stainless steel (AISI 304), for aggressive environments.



Extra-flat profile

Extra-flat scale, ideal for wheelchairs weighing.

Principal functions

The Condor platforms are utterly equipped. They are composed of two serial access ramps which allow weighing loads on wheels, such as pallet trucks or any other movable trolley. Those low-profile ramps facilitate the access to the platform involving minimal effort of the operator.

The platforms Condor, available in three versions (painted steel and stainless steel) and in three sizes (800x800mm, 1200 x 1200 and 1500 x 1500) adapts perfectly to any type of industrial or trade applications: reception and shipment of goods, production, orders preparation, etc.

Regarding the painted steel models, their epoxy painted steel structure, highly resistant, guarantees daily and intensive use of the scale. Consequently, the painting allows using Condor in both dry and wet environments. This Epoxy finish converts the platform Condor into a waterproof structure, easy to clean and very resistant in intensive and continuous use in the hardest working conditions.

For the uses in very humid sites or in a very aggressive environment, we offer the stainless steel Condor model, entirely manufactured by Gram (Condor Inox).

The Condor platforms are composed of upper structure as thick as 3,5 mm and internal U-shape structure as thick as 3 mm. They are very resistant and guarantee intensive use. Their structure maximally resists up to 3000 kg (depends on the load cells).

Condor allows for total evacuation of liquids thanks to its edges-free design and open construction.

Four adjustable feet of Condor platforms guarantee an optimal stability. They not only level the platform when there are irregularities in the floor; but also guarantee an optimal force transmission to the load sensors.

The four load cells type C3 valid in Legal Metrology and placed in every corner of the platform allow maximal precision and reliability of weighing. These load cells are of nicked steel with IP-67 protection (complete protection against dust and waterproof up to 1m depth). All the load cells are connected to the junction box made of ABS or of stainless steel, according to the model, in order to guarantee a long and useful life of the scale. Your Condor will work perfectly for many years.

The optional column support for the indicator makes it always visible; you don't need to place it on the wall or desk. The Condor series can work with all GRAM indicators.



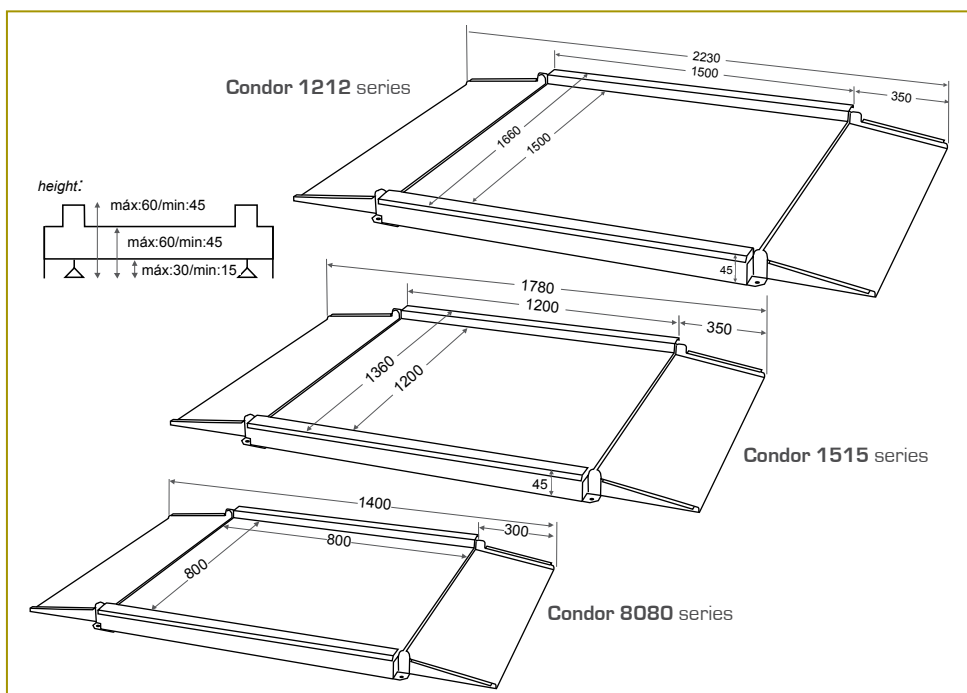
Two folding access ramps included

Two low rise access ramps facilitate the access to the platform and allow an easy weighing with manual or electronic forklifts.

Technical features

Model	Condor 8080	Condor 1212	Condor 1515	Condor AI 8080	Condor AI 1212	Condor AI 1515				
Reference	60757	5317	5269	5318	5270	60834	5319	5271	5320	5272
Capacity	600 kg	1500 kg	3000 kg	1500 kg	3000 kg	600 kg	1500 kg	3000 kg	1500 kg	3000 kg
Readability	100 g	500 g	1000 g	500 g	1000 g	100 g	500 g	1000 g	500 g	1000 g
Structure	Painted steel					Stainless steel				
Load cells	H8C Rebel OIML C3 Class					B8D Rebel Stainless steel				
Junction box	ABS or Stainless steel load cells with IP-67 protection									
Useful size (mm)	800 x 800	1200 x 1200	1500 x 1500	800 x 800	1200 x 1200	1500 x 1500				
Minimal height (mm)	85									
Maximal height (mm)	100									
Total net weight (kg)	90	115	160	95	100	100				

External dimensions (mm)



Available options

- Stainless steel CS-1 column
- Connection cable extension
- Stainless steel wall support.
- Indicators in Legal Metrology: K2, K2E, K2N, K2EN, K2P and K4i.
- Indicators for internal use: K3, K3i, K1, K5i, IVP, IKP and SC2.

Technical specifications

Power: 230 V / 50 Hz (Euro) 11 V AC
Operation temperature: +5°C / +35°C