

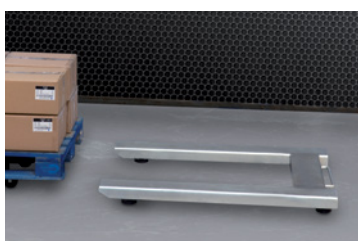
series SScorpion



Scorpion Series: small size which allows weighing everything.



- Pallet scale with four high resistant load cells.
- Three available versions: epoxy painted steel, zinc and stainless steel.
- Load cells: C3 OIML and junction box in ABS or stainless steel.
- A handle and front wheels to move it easily.
- Fork size: 920 x 1200 mm.
- High protection against corrosion and water (zinc and stainless steel models).
- Column to support indicator (optional).
- Connecting to GRAM indicators.



Handle and front wheels to move it easily

In order to displace it easily and without effort, the SScorpion pallet scale is equipped with a handle and two front wheels.

Principal functions

The **SCorpio** pallet scale, is perfectly suitable for all types of applications: production, logistics, shipping goods, orders preparation, etc.

Its standard fork dimensions, as wide as 920 mm and as long as 1200 mm, make it suitable for weighing all types of European pallets. Moreover, the load capacity of 1500 kg is high enough to weigh ordinary industrial or trade pallets.

The robust structure of epoxy painted steel (painted model) ensures reliable and intensive use. Thanks to its epoxy painting, the pallet scale can be used in both dry and wet environments. This epoxy painting converts the SCorpio into a waterproof structure easy to clean and very resistant to acids, shocks, scratches and detergent products.

The zinc model not only guarantees a very good resistance against corrosion, corrosive chemicals and highly abrasive detergents but also gives a maximal

protection in sustainable use.

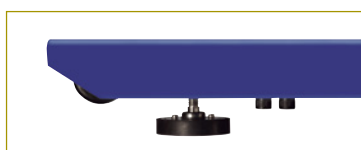
The stainless steel model of impeccable finish is the best SCorpio version. It is protected against the most aggressive factors, keeping its fine aspect and functioning during many years of utilisation. Made of AISI-304 stainless steel, it is the best invest you can make in a pallet scale.

To move it easily in the warehouse, the SCorpio is equipped with a handle and two small front wheels.

With four adjustable feet, the **SCorpio ensures optimal stability**. It does not matter if the floor is not perfectly flat or with irregularities, the pallet scale will always be able to adjust to all surfaces. The four feet ensure optimal transmission of force to the load sensors.

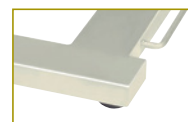
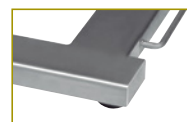
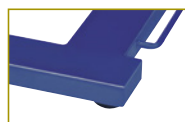
The four load cells type C3 valid in Legal Metrology and placed in every corner of the platform allow maximal precision and reliability of weighing. These load cells are of nickered steel with IP-67 protection (complete protection against dust and waterproof up to 1m depth).

The SCorpio series can work with all GRAM indicators. The optional column support for the indicator makes the display always visible; you don't need to place it on the wall or desk.



Adjustable feet

The adjustable feet allow levelling the pallet scale if there are irregularities in the ground; they also ensure an optimal force transmission to the load sensors.



Technical features

Model	SCorpio	SCorpio AI	SCorpio Z
Reference	4348	4852	6498
Capacity	1500 kg	1500 kg	1500 kg
Readability	500 g	500 g	500 g
Structure	Painted steel	Stainless steel	Zinc steel
Load cells	H8C Rebel OIML C3 Class	B8D Rebel stainless steel	H8C Rebel OIML C3 Class
Junction box	ABS or Stainless steel load cells with IP-67 protection		
Fork dimensions (mm)	925 x 1200		
Fork dimensions int. (mm)	990 x 600		
Total dimensions (mm)	1200		
Fork height (mm)	60		
Height min. (mm)	90		
Height max. (mm)	105		
Total net weight (kg)	47	67	50

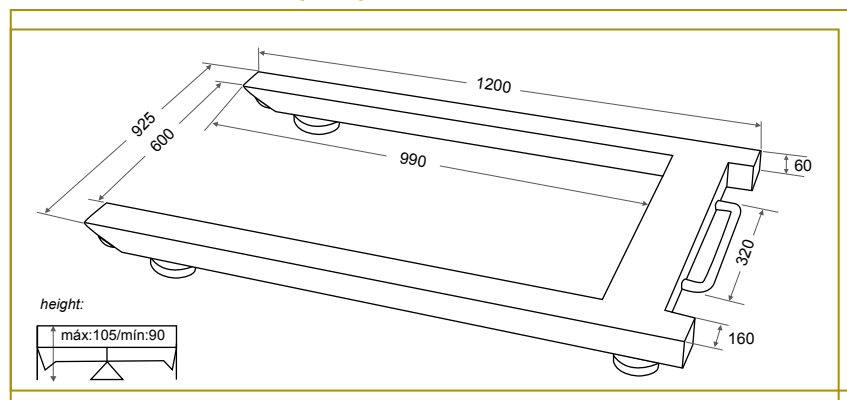
Epoxy painted steel structure / stainless steel / zinc structure

The SCorpio pallet scale is available in three versions: epoxy painted, steel version, electrolytic zinc covered steel version and stainless steel version.

Available options

- Column
- Connection cable extension
- Stainless steel wall support
- Indicators in Legal Metrology: K2, K2E, K2N, K2EN, K2P and K4i.
- Indicators for internal use: K3, K3i, K1, K5i, IVP, IKP and SC2.

External dimensions (mm)



Technical specifications

Power: 230 V/50 Hz (Euro) 11 V AC

Operation temperature: +5°C / +35°C